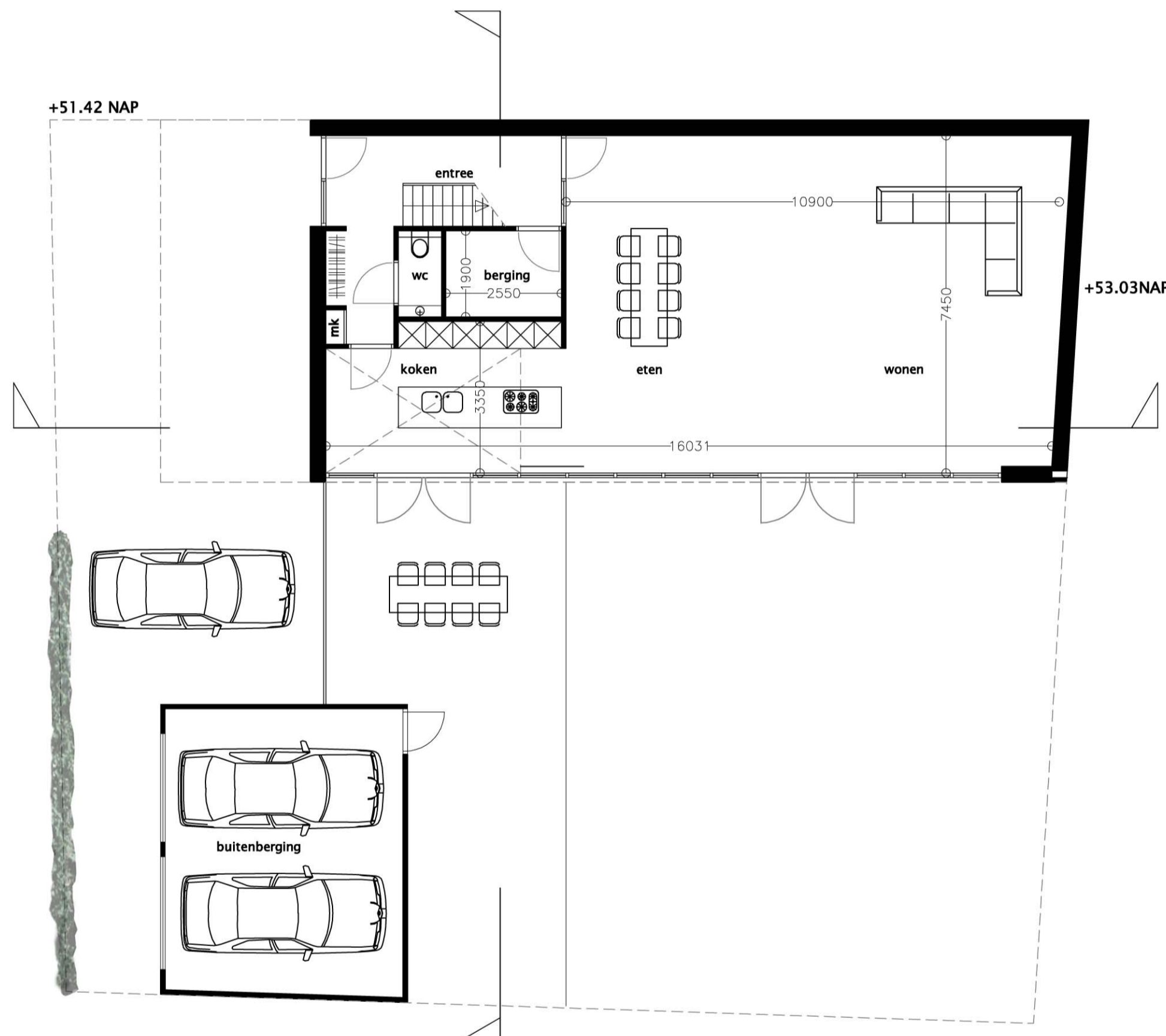




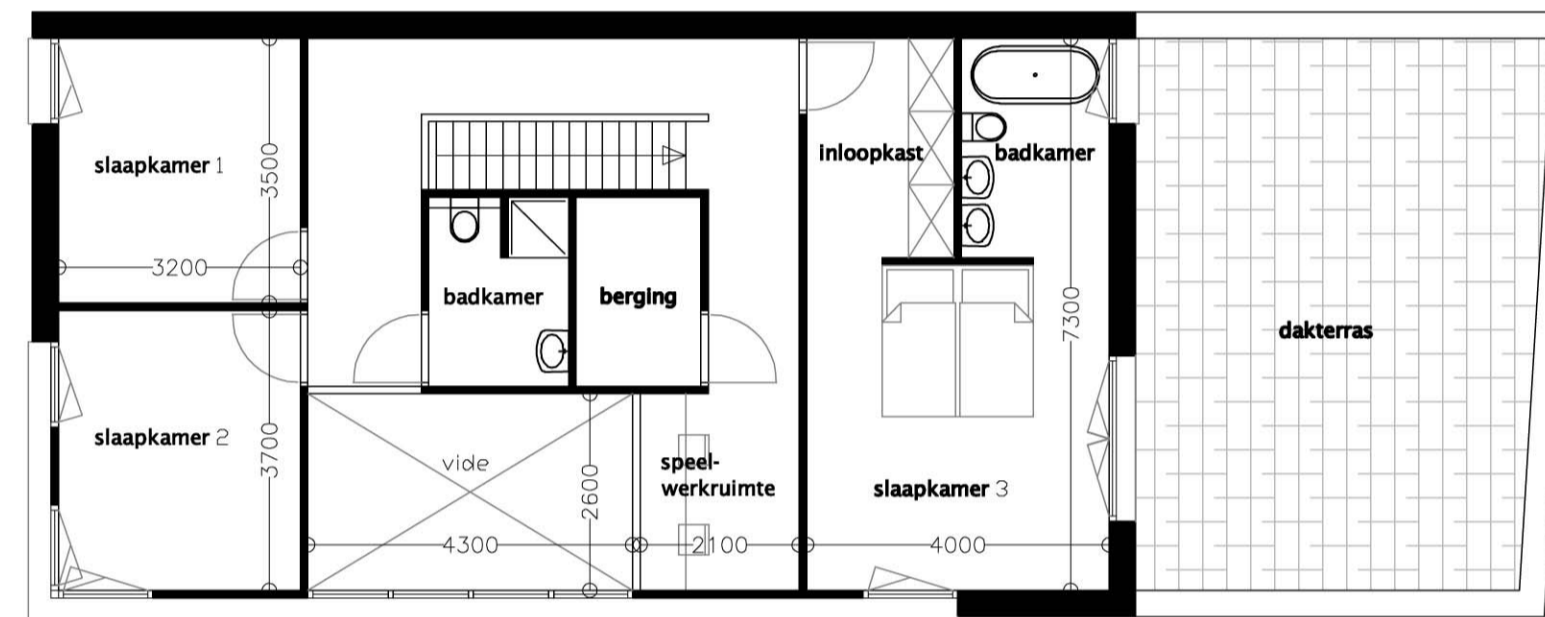
gevel west

gevel oost

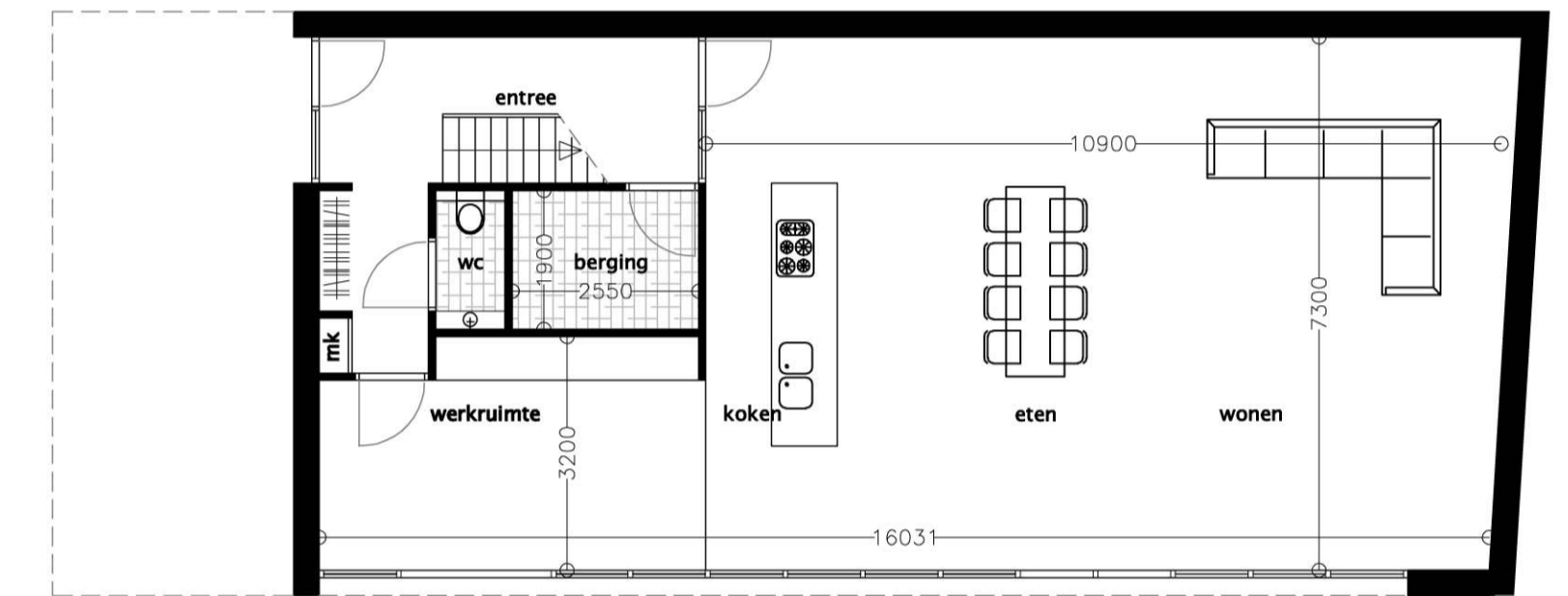


begane grond

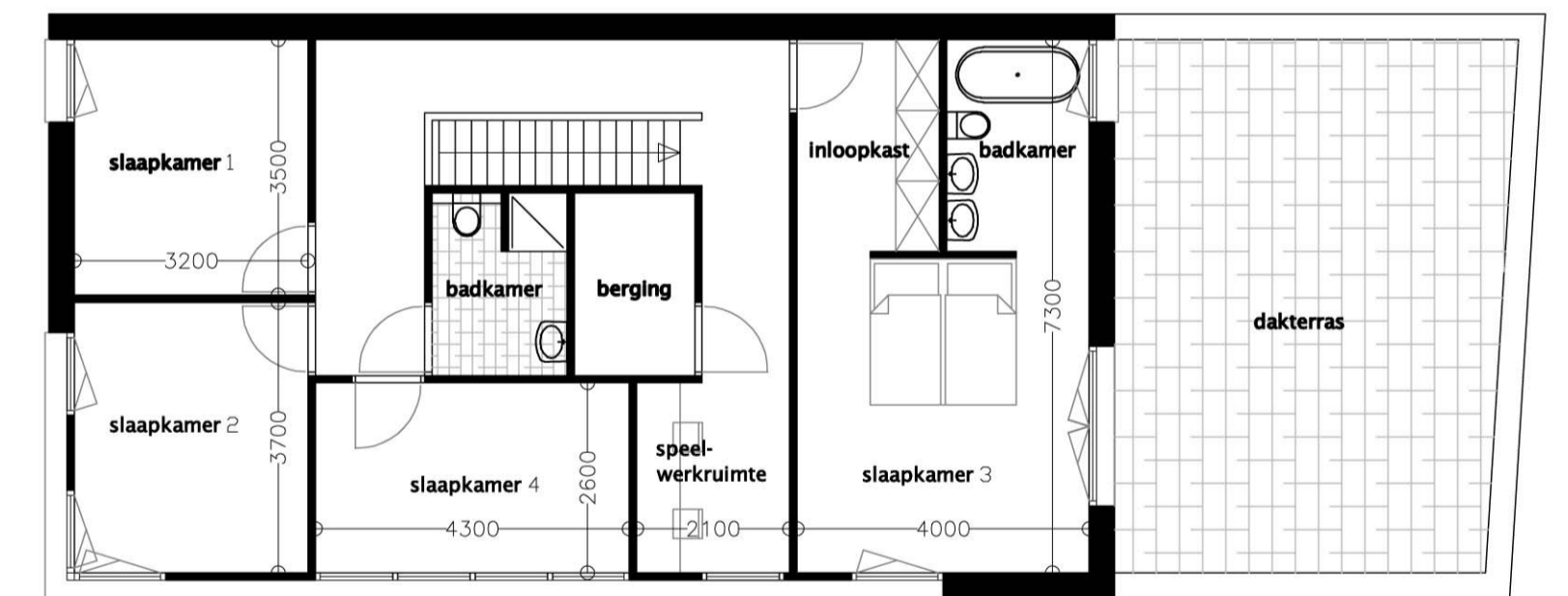
bruto vloeroppervlak 241.2m²
bruto inhoud 865m³ excl dakterras



verdieping

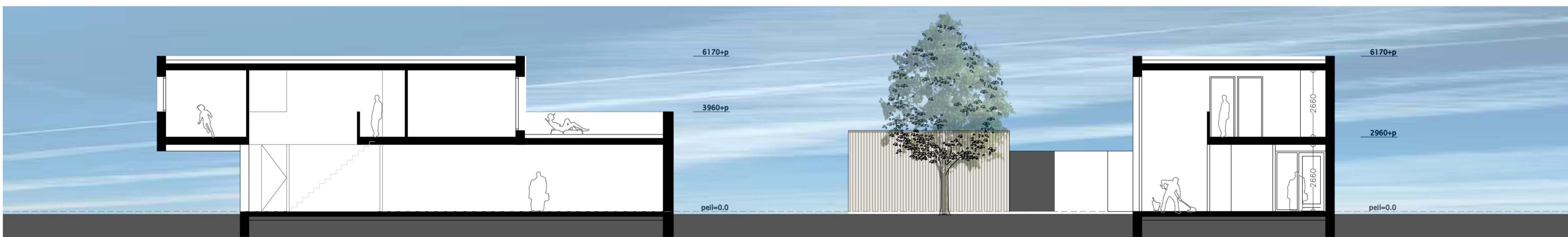


begane grond - variant



verdieping - variant zonder vide

bruto vloeroppervlak 252.4m²
bruto inhoud 865m³ excl dakterras



langsdoorsnede

dwarsdoorsnede

datum:	12-10-2010		
U4388		project no	
VIJVERPARC		project	
SITTARD		opdrachtgever	
VIJVERPARCBV			
SITTARD			
VO KAVEL19_TYPE02 865M3		onderdeel	
VO01			
tekening no	boundeel		
JJ	TB	1:100	A1
projectleider	tekenaar	schaal	formaat
U4388 TEK IN 20101012 PLEI level 19 type 1 en 2.dwg			

